

vmware, esx, i, driver, broadcom, vmnic, actualizar

Instalar Driver tarjeta Broadcom

vamos a la página de descargas para vsphere.

https://my.vmware.com/group/vmware/info?slug=datacenter_cloud_infrastructure/vmware_vsphere/5_5 Elegimos nuestra versión de vsphere →5.5 y pulsamos sobre la pestaña Drivers&Tools→Driver Cds y descargamos el driver adecuado. En nuestro caso el Vmware ESXi 5.5 Driver CD for Broadcom

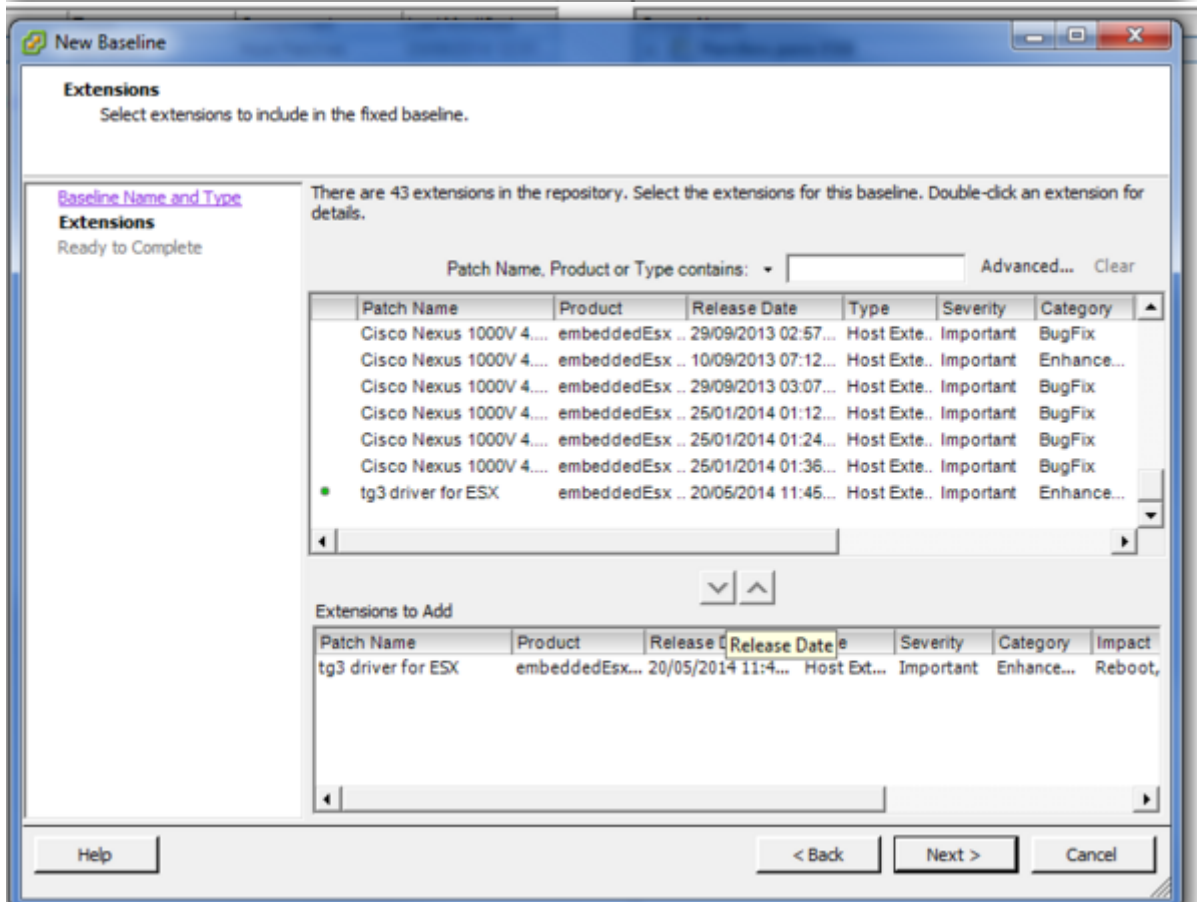
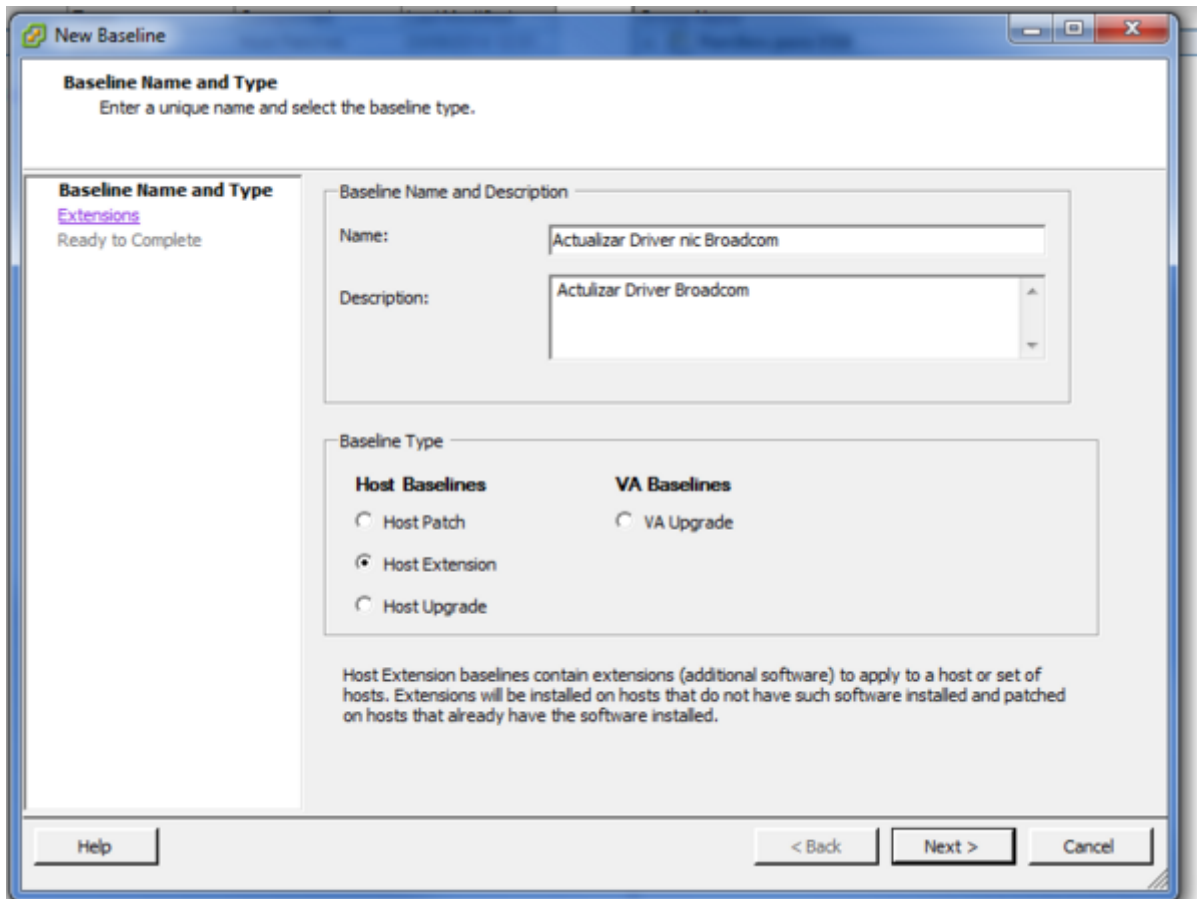
En nuestro caso nos bajamos el archivo tg3-3.136h.v55.1-1830969.zip que lo descomprimos en una carpeta.

Aunque el paquete se puede instalar directamente en el esxi nosotros lo vamos a instalar usando el update manager del vcenter.

Vcenter→update Manager → Pestaña Patch Repository → Import Patches →y cogemos el fichero tg3-3.136h.v55.1-offline_bundle-1830969.zip que está dentro de la carpeta donde descomprimimos

Patch Name	Product	Release Date	Type	Severity	Category	Impact	Vendor	Patch ID	Baselines
Cisco Nexus 4.2(0)N2(2.3)	embeddedEsx 5.5	20/02/2014 11:26:13	Host Extension	Important	BugFix	Maintenance Mode/Update	Cisco Systems, Inc.	ESX550-201401144024-BG	Add to baseline...
Updates ESX 5.5 esx-base vib	embeddedEsx 5.5	11/03/2014 08:00:00	Update	Critical	Security	Reboot, Maintenance Mode	VMware, Inc.	ESX550-201403201-06	Add to baseline...
Updates ESX 5.5 tools-light vib	embeddedEsx 5.5	11/03/2014 08:00:00	Patch	Important	Security		VMware, Inc.	ESX550-201403201-06	Add to baseline...
Updates ESX 5.5 esx-base vib	embeddedEsx 5.5	11/03/2014 08:00:00	Update	Critical	BugFix	Reboot, Maintenance Mode	VMware, Inc.	ESX550-201403201-UG	Add to baseline...
Updates ESX 5.5 tools-light vib	embeddedEsx 5.5	11/03/2014 08:00:00	Update	Important	BugFix		VMware, Inc.	ESX550-201403201-UG	Add to baseline...
Updates ESX 5.5 ntp vib	embeddedEsx 5.5	11/03/2014 08:00:00	Update	Important	BugFix	Reboot, Maintenance Mode	VMware, Inc.	ESX550-201403201-UG	Add to baseline...
Updates ESX 5.5 net-eflow vib	embeddedEsx 5.5	11/03/2014 08:00:00	Update	Important	BugFix	Reboot, Maintenance Mode	VMware, Inc.	ESX550-201403201-UG	Add to baseline...
Updates ESX 5.5 scsi-mpt2sas vib	embeddedEsx 5.5	11/03/2014 08:00:00	Update	Important	BugFix	Reboot, Maintenance Mode	VMware, Inc.	ESX550-201403201-UG	Add to baseline...
Updates ESX 5.5 lsi-megaSAS vib	embeddedEsx 5.5	11/03/2014 08:00:00	Update	Important	BugFix	Reboot, Maintenance Mode	VMware, Inc.	ESX550-201403201-UG	Add to baseline...
Updates ESX 5.5 netip2be-native vib	embeddedEsx 5.5	11/03/2014 08:00:00	Update	Important	BugFix	Reboot, Maintenance Mode	VMware, Inc.	ESX550-201403201-UG	Add to baseline...
Updates ESX 5.5 sata-ahci vib	embeddedEsx 5.5	11/03/2014 08:00:00	Update	Important	BugFix	Reboot, Maintenance Mode	VMware, Inc.	ESX550-201403201-UG	Add to baseline...
Updates ESX 5.5 scsi-megaraid-sas vib	embeddedEsx 5.5	11/03/2014 08:00:00	Update	Important	BugFix	Reboot, Maintenance Mode	VMware, Inc.	ESX550-201403201-UG	Add to baseline...
Updates ESX 5.5 net-igmp vib	embeddedEsx 5.5	11/03/2014 08:00:00	Update	Important	BugFix	Reboot, Maintenance Mode	VMware, Inc.	ESX550-201403218-UG	Add to baseline...
Updates ESX 5.5 net-igmp vib	embeddedEsx 5.5	11/03/2014 08:00:00	Update	Critical	BugFix	Reboot, Maintenance Mode	VMware, Inc.	ESX550-201403211-UG	Add to baseline...
See description, (No KB)	embeddedEsx 5.5	10/04/2014 09:00:00	Rollup	Critical	BugFix	Reboot, Maintenance Mode	VMware, Inc.	ESX550-1040401	Add to baseline...
Updates VML, hostd, Scripts, CPM, Others	esx 4.0.0	10/04/2014 09:00:00	Patch	Critical	Security	Reboot, Maintenance Mode, ...	VMware, Inc.	ESX400-201404011-00	Add to baseline...
Updates ntp	esx 4.0.0	10/04/2014 09:00:00	Patch	Critical	Security		VMware, Inc.	ESX400-201404012-00	Add to baseline...
Updates VML, guest-install, Apps	esx 4.1.0	10/04/2014 09:00:00	Patch	Critical	Security	Reboot, Maintenance Mode, ...	VMware, Inc.	ESX410-201404011-00	Add to baseline...
Updates ntp	esx 4.1.0	10/04/2014 09:00:00	Patch	Critical	Security		VMware, Inc.	ESX410-201404012-00	Add to baseline...
Updates Firmware	embeddedEsx 4.0.0	10/04/2014 09:00:00	Patch	Critical	Security	Reboot, Maintenance Mode	VMware, Inc.	ESX400-201404011-00	Add to baseline...
Updates vSphere Client	embeddedEsx 4.0.0	10/04/2014 09:00:00	Patch	Critical	Security		VMware, Inc.	ESX400-201404012-00	Add to baseline...
Updates Firmware	embeddedEsx 4.1.0	10/04/2014 09:00:00	Patch	Critical	Security	Reboot, Maintenance Mode	VMware, Inc.	ESX410-201404011-00	Add to baseline...
Updates esx-base	embeddedEsx 5.0	10/04/2014 09:00:00	Patch	Critical	Security	Reboot, Maintenance Mode	VMware, Inc.	ESX500-201404011-00	Add to baseline...
Updates tools-light	embeddedEsx 5.0	10/04/2014 09:00:00	Patch	Important	BugFix		VMware, Inc.	ESX500-201404012-00	Add to baseline...
Updates lsi-mS	embeddedEsx 5.0	10/04/2014 09:00:00	Patch	Important	BugFix	Reboot, Maintenance Mode	VMware, Inc.	ESX500-201404011-00	Add to baseline...
Updates esx-base	embeddedEsx 5.0	10/04/2014 09:00:00	Patch	Critical	Security	Reboot, Maintenance Mode	VMware, Inc.	ESX500-201404012-00	Add to baseline...
Updates esx-base	embeddedEsx 5.1.0	29/04/2014 09:00:00	Patch	Critical	Security	Reboot, Maintenance Mode	VMware, Inc.	ESX510-201404011-00	Add to baseline...
Updates tools-light	embeddedEsx 5.1.0	29/04/2014 09:00:00	Patch	Important	Security		VMware, Inc.	ESX510-201404012-00	Add to baseline...
Updates esx-base	embeddedEsx 5.1.0	29/04/2014 09:00:00	Patch	Critical	BugFix	Reboot, Maintenance Mode	VMware, Inc.	ESX510-201404011-00	Add to baseline...
Updates tools-light	embeddedEsx 5.1.0	29/04/2014 09:00:00	Patch	Important	BugFix		VMware, Inc.	ESX510-201404012-00	Add to baseline...
Updates esx-base	embeddedEsx 5.0	29/05/2014 09:00:00	Patch	Critical	Security	Reboot, Maintenance Mode	VMware, Inc.	ESX500-201405011-00	Add to baseline...
Updates tools-light	embeddedEsx 5.0	29/05/2014 09:00:00	Patch	Important	Security		VMware, Inc.	ESX500-201405012-00	Add to baseline...
Updates esx-base	embeddedEsx 5.0	29/05/2014 09:00:00	Patch	Important	BugFix	Reboot, Maintenance Mode	VMware, Inc.	ESX500-201405011-00	Add to baseline...
Updates tools-light	embeddedEsx 5.0	29/05/2014 09:00:00	Patch	Important	BugFix	Reboot, Maintenance Mode	VMware, Inc.	ESX500-201405012-00	Add to baseline...
Updates scsi-megaraid-sas	embeddedEsx 5.0	29/05/2014 09:00:00	Patch	Important	BugFix	Reboot, Maintenance Mode	VMware, Inc.	ESX500-201405011-00	Add to baseline...
tg3 driver for ESX	embeddedEsx 5.5, emb...	20/05/2014 11:45:50	Host Extension	Important	Enhancement	Reboot, Maintenance Mode	Broadcom	tg3-3.136h.v55.1	Add to baseline...

Una vez en nuestro repositorio ya sólo bastaría con crear una nueva baseline o añadirla a una ya existente. En nuestro caso creamos una nueva baseline y se la asociamos a los esxi que tengan ese tipo de tarjeta.



Una vez asociada la nueva baseline con el ESXI bastaría con pinchar sobre el botón **Remediate** de la pestaña Update Manager

Buscar Driver

Otra opción para encontrar el driver adecuado es ir a VMware Compatibility Guide <http://www.vmware.com/resources/compatibility/search.php> y realizar la búsqueda según el criterio deseado.

VMware Compatibility Guide

Search Compatibility Guide: (e.g. compatibility or esx or 3.0) All Listings Search

Looking for a simplified search? [Use the Guided Search Wizard](#)

What are you looking for: IO Devices Compatibility Guides Help Current Results: 0

Product Release Version: All ESX 5.5 UI ESX 5.5 ESX 5.1 U2 ESX 5.1 UI ESX 5.1

Brand Name: All Adaptec Adaptec by PMC Allied Telesis AMCC AMD (Advanced Micro Devices, Inc.)

Keyword:

Update and View Results Reset

VID: All

DID: All

SVID: All

Max SSID: All

Por ejemplo en el caso de las tarjetas de red podemos buscar por los campos

- VID→Vendor ID
- DID→Device ID
- SVID→Sub-vendor ID
- SSID→Sub Device ID



Normalmente sólo tenemos que poner los dos primeros para realizar la búsqueda

Esos parámetros se pueden obtener conectandonos por consola a ESXi y ejecutar el siguiente comando

```
vmkchdev -l grep "vmnic"
```

y nos saldrá una pantalla similar a esta

```
~ # vmkchdev -l | grep "vmnic"
0000:05:00.0 14e4:164c 1028:01b2 vmkernel vmnic0
0000:09:00.0 14e4:164c 1028:01b2 vmkernel vmnic1
0000:0d:00.0 14e4:164c 14e4:164c vmkernel vmnic2
          VID:DID  SVID:SSID
```



Con



```
ethtool -i vmnic0
```

podemos saber la versión del driver que tenemos instalado

Referencias

- <http://adriank.org/how-to-update-intelbroadcom-network-drivers-on-esxi-45/>

From:

<http://wiki.intrusos.info/> - **LCWIKI**

Permanent link:

<http://wiki.intrusos.info/virtualizacion:vmware:version5:driver>

Last update: **182023/01/ 13:46**

