

vmware, esx, i, driver, broadcom, vmnic, actualizar

Instalar Driver tarjeta Broadcom

vamos a la página de descargas para vsphere.

https://my.vmware.com/group/vmware/info?slug=datacenter_cloud_infrastructure/vmware_vsphere/5_5 Elegimos nuestra versión de vsphere →5.5 y pulsamos sobre la pestaña Drivers&Tools→Driver Cds y descargamos el driver adecuado. En nuestro caso el Vmware ESXi 5.5 Driver CD for Broadcom

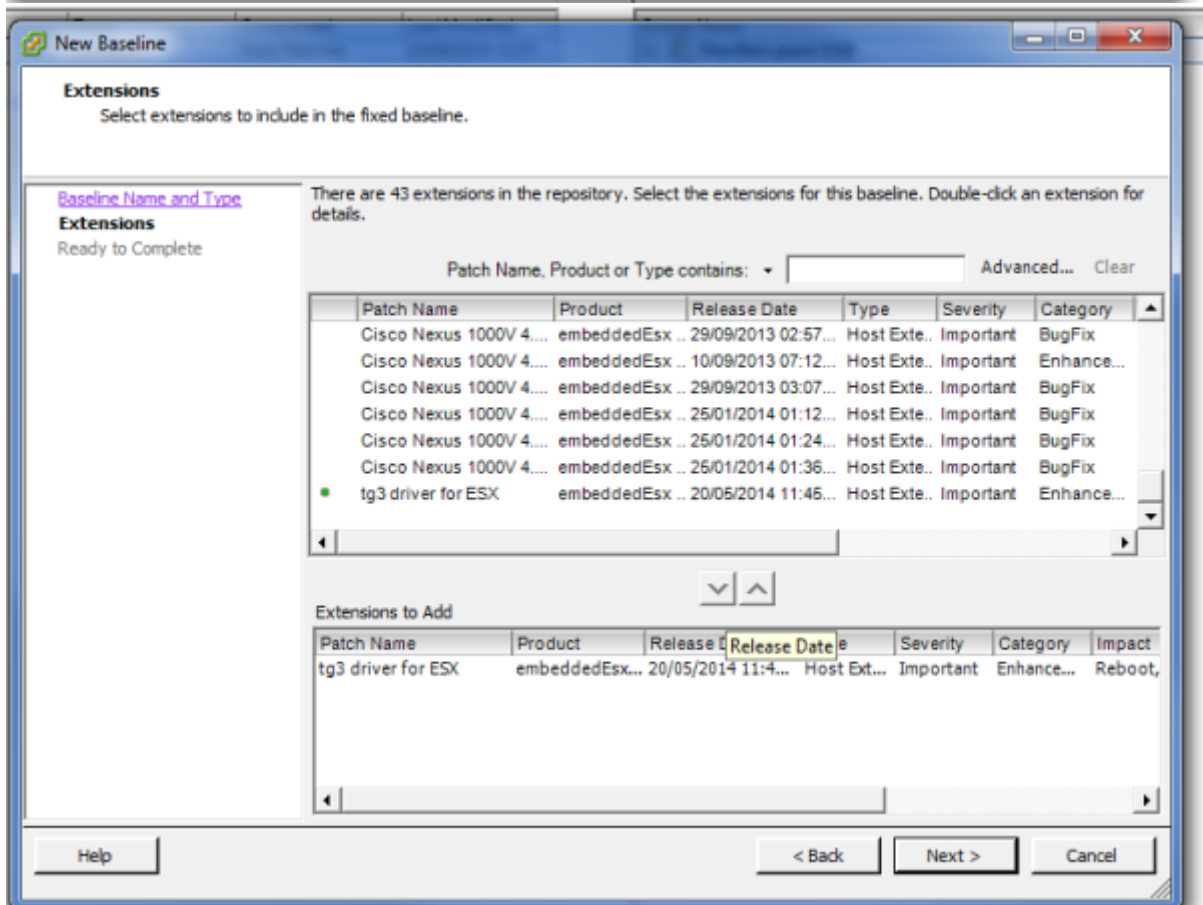
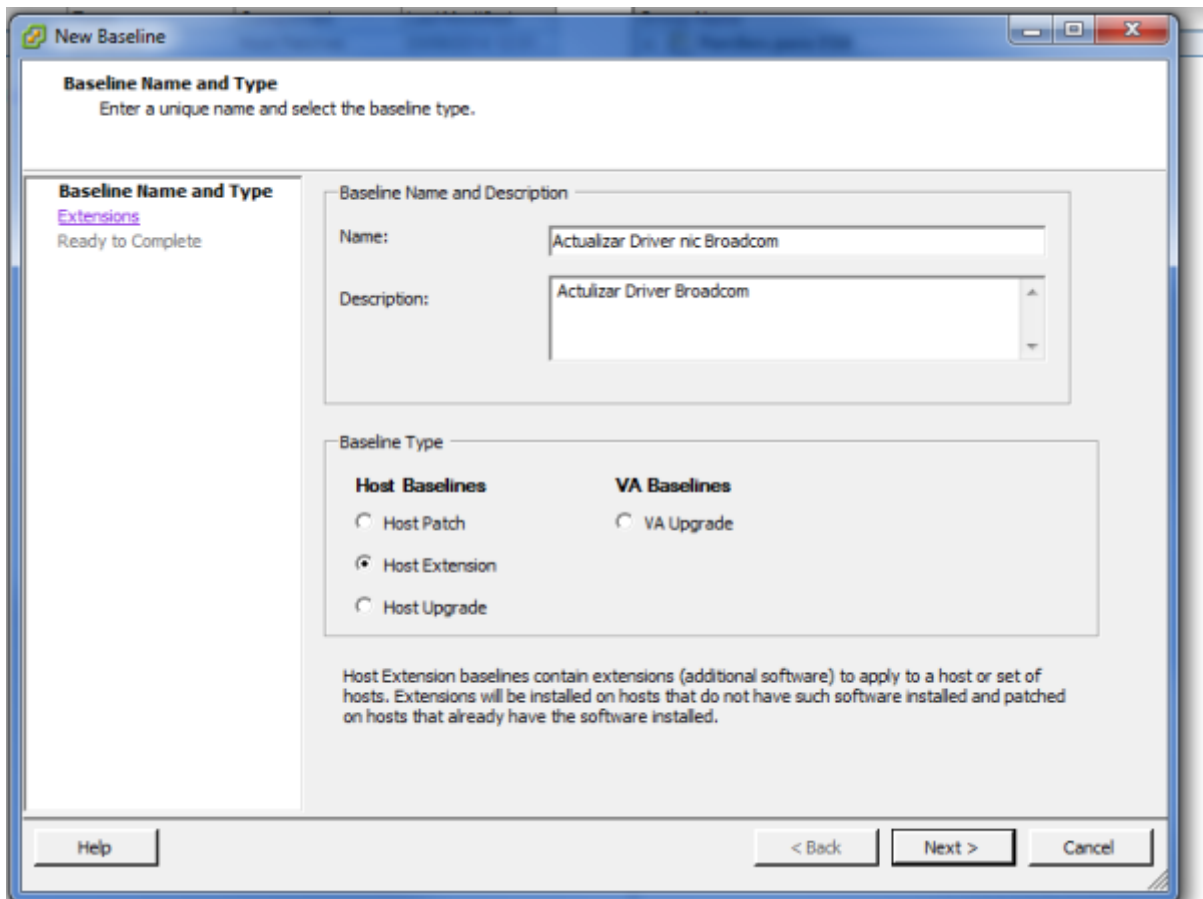
En nuestro caso nos bajamos el archivo tg3-3.136h.v55.1-1830969.zip que lo descomprimos en una carpeta.

Aunque el paquete se puede instalar directamente en el esxi nosotros lo vamos a instalar usando el update manager del vcenter.

Vcenter→update Manager → Pestaña Patch Repository → Import Patches →y cogemos el fichero tg3-3.136h.v55.1-offline_bundle-1830969.zip que está dentro de la carpeta donde descomprimimos

| Patch Name | Product | Release Date | Type | Severity | Category | Impact | Vendor | Patch ID | Resolves |
|--|-------------------------|---------------------|----------------|-----------|-------------|-------------------------------|---------------------|-----------------------|--------------------|
| Cisco Nexus 4200v(2/2.2) | embeddedEsx 5.5.8 | 25/01/2014 01:26:13 | Host Extension | Important | BugFix | Maintenance Mode(Update) | Cisco Systems, Inc. | ES0558-20140118404-EG | Add to baseline... |
| updates ESXi 5.5 esx-base vib | embeddedEsx 5.5.8 | 11/03/2014 00:00:00 | Update | Critical | Security | Reboot, Maintenance Mode | VMware, Inc. | ES0559-201403200-5G | Add to baseline... |
| updates ESXi 5.5 tools-light vib | embeddedEsx 5.5.8 | 11/03/2014 00:00:00 | Patch | Important | Security | | VMware, Inc. | ES0559-201403200-6G | Add to baseline... |
| updates ESXi 5.5 esx-base vib | embeddedEsx 5.5.8 | 11/03/2014 00:00:00 | Update | Critical | BugFix | Reboot, Maintenance Mode | VMware, Inc. | ES0559-201403200-1G | Add to baseline... |
| updates ESXi 5.5 tools-light vib | embeddedEsx 5.5.8 | 11/03/2014 00:00:00 | Update | Important | BugFix | | VMware, Inc. | ES0559-201403200-2G | Add to baseline... |
| updates ESXi 5.5 net vrb | embeddedEsx 5.5.8 | 11/03/2014 00:00:00 | Update | Important | BugFix | Reboot, Maintenance Mode | VMware, Inc. | ES0559-201403200-3G | Add to baseline... |
| updates ESXi 5.5 net-usb vrb | embeddedEsx 5.5.8 | 11/03/2014 00:00:00 | Update | Important | BugFix | Reboot, Maintenance Mode | VMware, Inc. | ES0559-201403200-4G | Add to baseline... |
| updates ESXi 5.5 pci-mpt2a vib | embeddedEsx 5.5.8 | 11/03/2014 00:00:00 | Update | Important | BugFix | Reboot, Maintenance Mode | VMware, Inc. | ES0559-201403200-5G | Add to baseline... |
| updates ESXi 5.5 pci-mpt2 vib | embeddedEsx 5.5.8 | 11/03/2014 00:00:00 | Update | Important | BugFix | Reboot, Maintenance Mode | VMware, Inc. | ES0559-201403200-6G | Add to baseline... |
| updates ESXi 5.5 pci-mpt2a-native vib | embeddedEsx 5.5.8 | 11/03/2014 00:00:00 | Update | Important | BugFix | Reboot, Maintenance Mode | VMware, Inc. | ES0559-201403200-7G | Add to baseline... |
| updates ESXi 5.5 pci-mpt2a-native vib | embeddedEsx 5.5.8 | 11/03/2014 00:00:00 | Update | Important | BugFix | Reboot, Maintenance Mode | VMware, Inc. | ES0559-201403200-8G | Add to baseline... |
| updates ESXi 5.5 pci-mpt2a-cas vib | embeddedEsx 5.5.8 | 11/03/2014 00:00:00 | Update | Important | BugFix | Reboot, Maintenance Mode | VMware, Inc. | ES0559-201403200-9G | Add to baseline... |
| updates ESXi 5.5 net-usb vib | embeddedEsx 5.5.8 | 11/03/2014 00:00:00 | Update | Important | Enhancement | Reboot, Maintenance Mode | VMware, Inc. | ES0559-201403210-1G | Add to baseline... |
| updates ESXi 5.5 net-fcp vib | embeddedEsx 5.5.8 | 11/03/2014 00:00:00 | Update | Critical | BugFix | Reboot, Maintenance Mode | VMware, Inc. | ES0559-201403210-2G | Add to baseline... |
| tee driver(esx, fba vb) | embeddedEsx 5.5.8 | 11/03/2014 00:00:00 | Rollup | Critical | BugFix | Reboot, Maintenance Mode | VMware, Inc. | ES0559-201404010 | Add to baseline... |
| updates VML, hostd, Scripts, CPM, Others | esx 4.8.0 | 10/04/2014 00:00:00 | Patch | Critical | Security | Reboot, Maintenance Mode... | VMware, Inc. | ES0480-201404010-5G | Add to baseline... |
| updates mtp | esx 4.8.0 | 10/04/2014 00:00:00 | Patch | Critical | Security | | VMware, Inc. | ES0480-201404010-6G | Add to baseline... |
| updates VMX, guest-install, Apps | esx 4.1.0 | 10/04/2014 00:00:00 | Patch | Critical | Security | Reboot, Maintenance Mode, ... | VMware, Inc. | ES0400-201404010-5G | Add to baseline... |
| updates mtp | esx 4.1.0 | 10/04/2014 00:00:00 | Patch | Critical | Security | | VMware, Inc. | ES0400-201404010-6G | Add to baseline... |
| updates Firmware | embeddedEsx 4.8.0 | 10/04/2014 00:00:00 | Patch | Critical | Security | Reboot, Maintenance Mode | VMware, Inc. | ES0480-201404010-5G | Add to baseline... |
| updates vix-base Client | embeddedEsx 4.8.0 | 10/04/2014 00:00:00 | Patch | Critical | Security | | VMware, Inc. | ES0480-201404010-6G | Add to baseline... |
| updates Firmware | embeddedEsx 4.1.0 | 10/04/2014 00:00:00 | Patch | Critical | Security | Reboot, Maintenance Mode | VMware, Inc. | ES0410-201404010-5G | Add to baseline... |
| updates esx-base | embeddedEsx 5.5.8 | 20/04/2014 00:00:00 | Patch | Critical | Security | Reboot, Maintenance Mode | VMware, Inc. | ES0559-201404010-5G | Add to baseline... |
| updates tools-light | embeddedEsx 5.5.8 | 20/04/2014 00:00:00 | Patch | Important | BugFix | | VMware, Inc. | ES0559-201404010-6G | Add to baseline... |
| updates lsi-m0 | embeddedEsx 5.5.8 | 10/04/2014 00:00:00 | Patch | Important | BugFix | Reboot, Maintenance Mode | VMware, Inc. | ES0559-201404010-7G | Add to baseline... |
| updates esx-base | embeddedEsx 5.5.8 | 20/04/2014 00:00:00 | Patch | Critical | Security | Reboot, Maintenance Mode | VMware, Inc. | ES0559-201404010-8G | Add to baseline... |
| updates esx-base | embeddedEsx 5.1.0 | 20/04/2014 00:00:00 | Patch | Critical | Security | Reboot, Maintenance Mode | VMware, Inc. | ES0510-201404010-5G | Add to baseline... |
| updates tools-light | embeddedEsx 5.1.0 | 20/04/2014 00:00:00 | Patch | Important | Security | | VMware, Inc. | ES0510-201404010-6G | Add to baseline... |
| updates esx-base | embeddedEsx 5.1.0 | 20/04/2014 00:00:00 | Patch | Critical | BugFix | Reboot, Maintenance Mode | VMware, Inc. | ES0510-201404010-7G | Add to baseline... |
| updates tools-light | embeddedEsx 5.1.0 | 20/04/2014 00:00:00 | Patch | Important | BugFix | | VMware, Inc. | ES0510-201404010-8G | Add to baseline... |
| updates esx-base | embeddedEsx 5.0.0 | 20/05/2014 00:00:00 | Patch | Critical | Security | Reboot, Maintenance Mode | VMware, Inc. | ES0509-201405010-5G | Add to baseline... |
| updates tools-light | embeddedEsx 5.0.0 | 20/05/2014 00:00:00 | Patch | Important | Security | | VMware, Inc. | ES0509-201405010-6G | Add to baseline... |
| updates esx-base | embeddedEsx 5.0.0 | 20/05/2014 00:00:00 | Patch | Important | BugFix | Reboot, Maintenance Mode | VMware, Inc. | ES0509-201405010-7G | Add to baseline... |
| updates tools-light | embeddedEsx 5.0.0 | 20/05/2014 00:00:00 | Patch | Important | BugFix | | VMware, Inc. | ES0509-201405010-8G | Add to baseline... |
| updates pci-megaahci | embeddedEsx 5.0.0 | 20/05/2014 00:00:00 | Patch | Important | BugFix | Reboot, Maintenance Mode | VMware, Inc. | ES0509-201405010-9G | Add to baseline... |
| tg3 driver for ESX | embeddedEsx 5.5, esx... | 20/05/2014 11:45:58 | Host Extension | Important | Enhancement | Reboot, Maintenance Mode | Broadcom | tg3-3.136h.v55.1 | Add to baseline... |

Una vez en nuestro repositorio ya sólo bastaría con crear una nueva baseline o añadirla a una ya existente. En nuestro caso creamos una nueva baseline y se la asociamos a los esxi que tengan ese tipo de tarjeta.

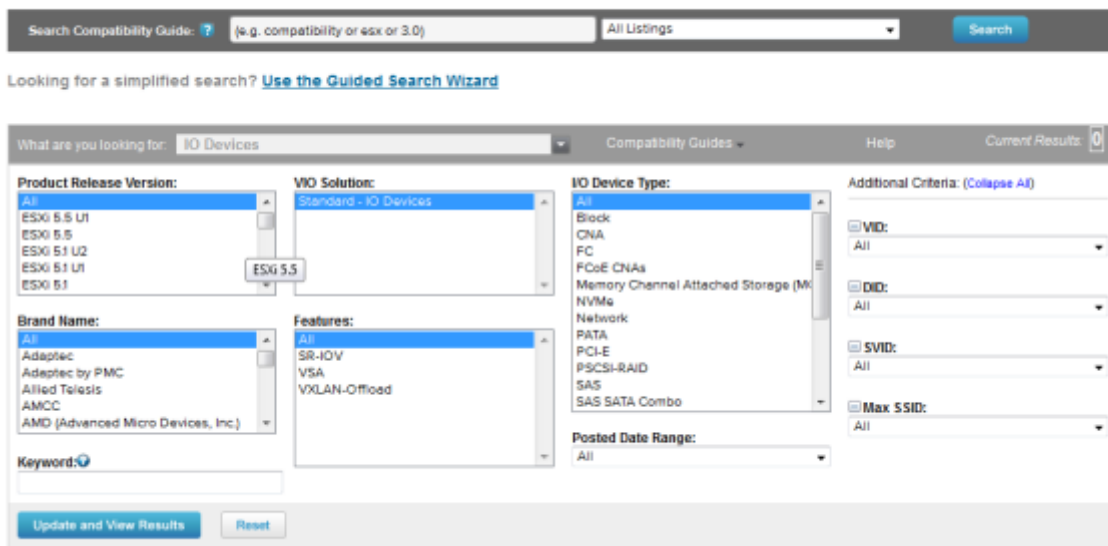


Una vez asociada la nueva baseline con el ESXI bastaría con pinchar sobre el botón **Remediate** de la pestaña Update Manager

Buscar Driver

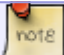
Otra opción para encontrar el driver adecuado es ir a VMware Compatibility Guide <http://www.vmware.com/resources/compatibility/search.php> y realizar la búsqueda según el criterio deseado.

VMware Compatibility Guide



Por ejemplo en el caso de las tarjetas de red podemos buscar por los campos

- VID→Vendor ID
- DID→Device ID
- SVID→Sub-vendor ID
- SSID→Sub Device ID

 Normalmente sólo tenemos que poner los dos primeros para realizar la búsqueda

Esos parámetros se pueden obtener conectandonos por consola a ESXi y ejecutar el siguiente comando

```
vmkchdev -l grep "vmnic"
```

y nos saldrá una pantalla similar a esta

```
~ # vmkchdev -l | grep "vmnic"
0000:05:00.0 14e4:164c 1028:01b2 vmkernel vmnic0
0000:09:00.0 14e4:164c 1028:01b2 vmkernel vmnic1
0000:0d:00.0 14e4:164c 14e4:164c vmkernel vmnic2
          VID:DID  SVID:SSID
```

 Con

```
ethtool -i vmnic0
```



podemos saber la versión del driver que tenemos instalado

Referencias

- <http://adriank.org/how-to-update-intelbroadcom-network-drivers-on-esxi-45/>

From:
<http://wiki.intrusos.info/> - LCWIKI

Permanent link:
<http://wiki.intrusos.info/doku.php?id=virtualizacion:vmware:version5:driver&rev=1611320090>

Last update: **2023/01/18 14:41**

