

Instalar Driver tarjeta Broadcom

vamos a la página de descargas para vsphere.

https://my.vmware.com/group/vmware/info?slug=datacenter_cloud_infrastructure/vmware_vsphere/5_5 Elegimos nuestra versión de vsphere →5.5 y pulsamos sobre la pestana Drivers&Tools→Driver Cds y descargamos el driver adecuado. En nuestro caso el Vmware ESXi 5.5 Driver CD for Broadcom

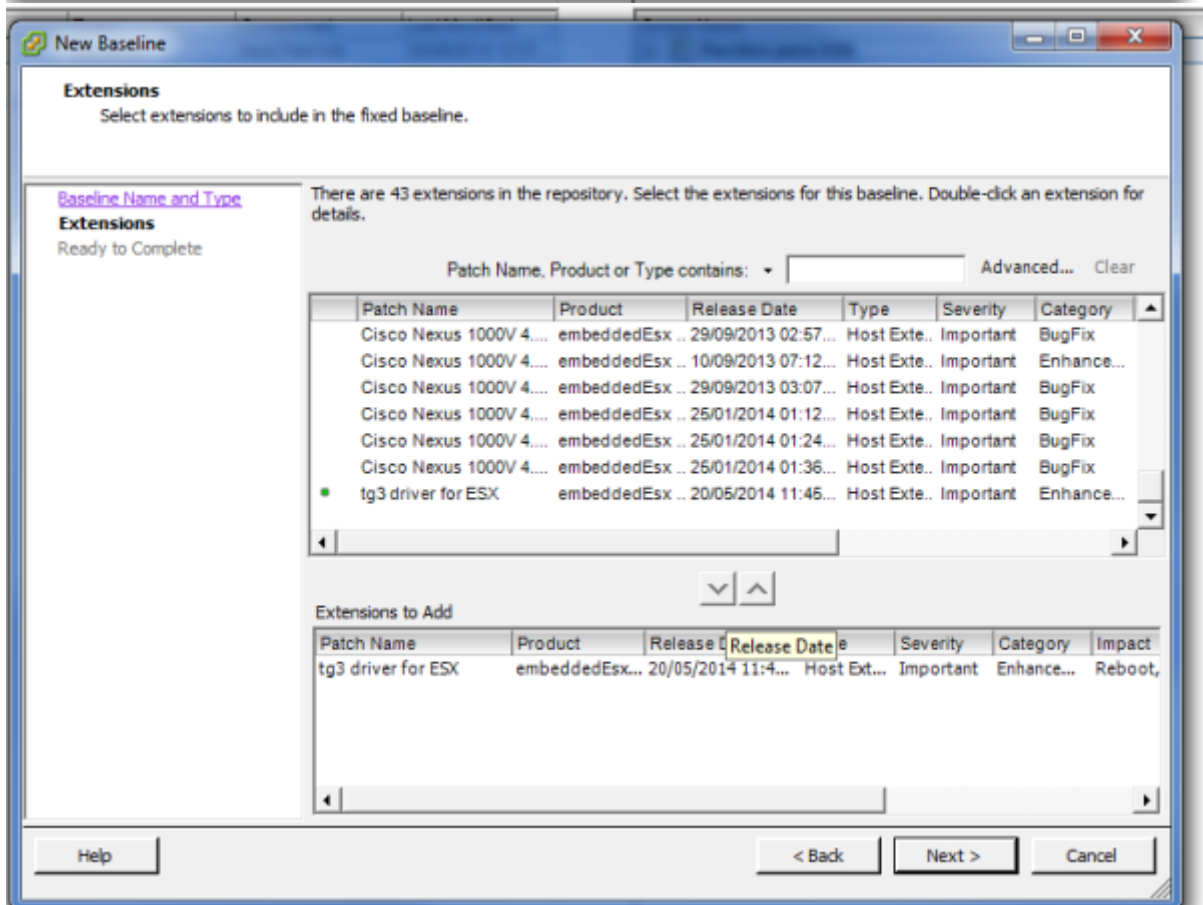
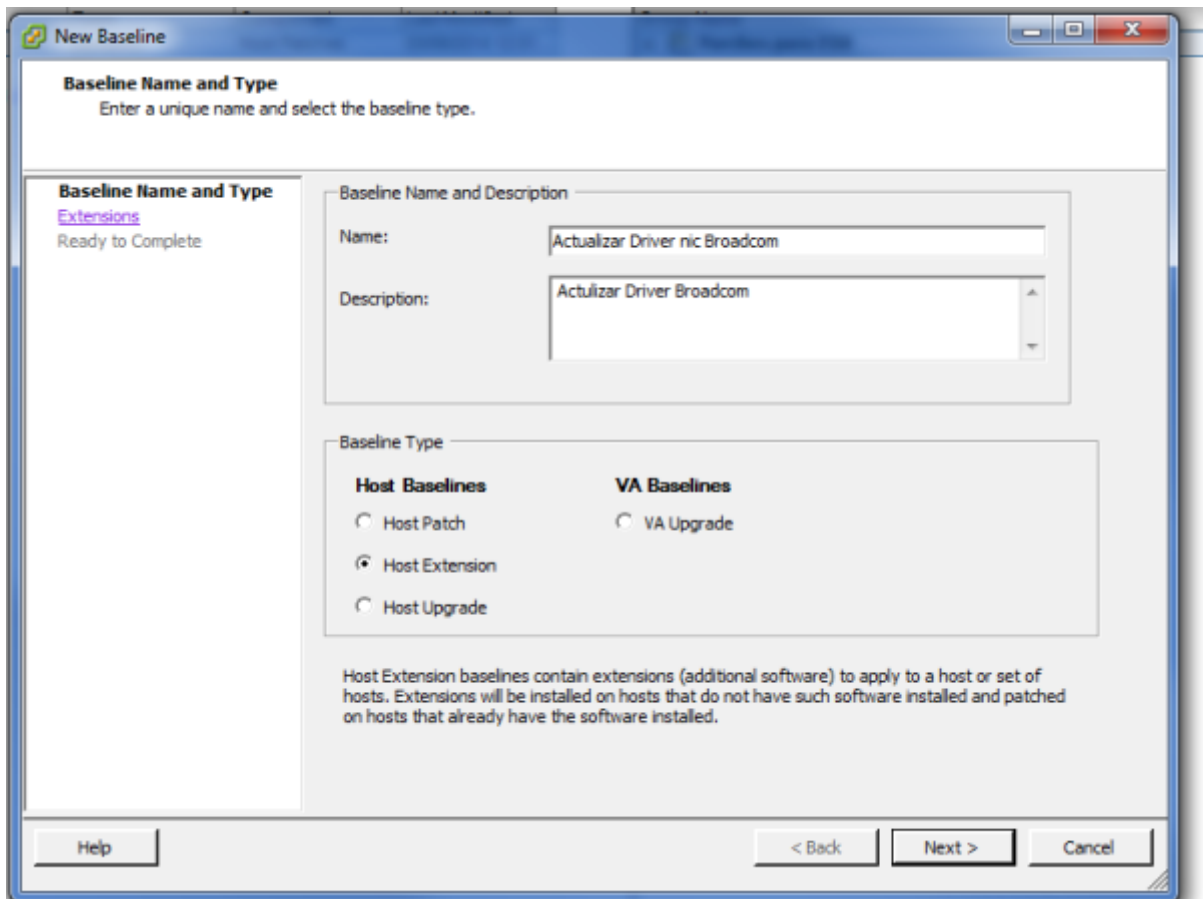
En nuestro caso nos bajamos el archivo tg3-3.136h.v55.1-1830969.zip que lo descomprimos en una carpeta.

Aunque el paquete se puede instalar directamente en el esxi nosotros lo vamos a instalar usando el update manager del vcenter.

Vcenter→update Manager → Pestaña Patch Repository → Import Patches →y cogemos el fichero tg3-3.136h.v55.1-offline_bundle-1830969.zip que está dentro de la carpeta donde descomprimimos

Patch Name	Product	Release Date	Type	Severity	Category	Impact	Vendor	Patch ID	Resolves
Cisco Nexus 5000v 4.2(01)2(2.2)	embeddedEsx 5.5.3	25/01/2014 01:26:13	Host Extension	Important	BugFix	Maintenance Mode(Update)	Cisco Systems, Inc.	ESX550-201401194504-EG	Add to baseline...
updates ESXi 5.5 esx-base vib	embeddedEsx 5.5.3	11/03/2014 00:00:00	Update	Critical	Security	Reboot, Maintenance Mode	VMware, Inc.	ESX550-201403200-GG	Add to baseline...
updates ESXi 5.5 tools-light vib	embeddedEsx 5.5.3	11/03/2014 00:00:00	Patch	Important	Security		VMware, Inc.	ESX550-201403200-GG	Add to baseline...
updates ESXi 5.5 esx-base vib	embeddedEsx 5.5.3	11/03/2014 00:00:00	Update	Critical	BugFix	Reboot, Maintenance Mode	VMware, Inc.	ESX550-201403200-LG	Add to baseline...
updates ESXi 5.5 tools-light vib	embeddedEsx 5.5.3	11/03/2014 00:00:00	Update	Important	BugFix		VMware, Inc.	ESX550-201403200-LG	Add to baseline...
updates ESXi 5.5 net-i386 vib	embeddedEsx 5.5.3	11/03/2014 00:00:00	Update	Important	BugFix	Reboot, Maintenance Mode	VMware, Inc.	ESX550-201403204-LG	Add to baseline...
updates ESXi 5.5 acsi-mp3sas vib	embeddedEsx 5.5.3	11/03/2014 00:00:00	Update	Important	BugFix	Reboot, Maintenance Mode	VMware, Inc.	ESX550-201403205-LG	Add to baseline...
updates ESXi 5.5 lsi-mega3 vib	embeddedEsx 5.5.3	11/03/2014 00:00:00	Update	Important	BugFix	Reboot, Maintenance Mode	VMware, Inc.	ESX550-201403206-LG	Add to baseline...
updates ESXi 5.5 mpt3sas-native vib	embeddedEsx 5.5.3	11/03/2014 00:00:00	Update	Important	BugFix	Reboot, Maintenance Mode	VMware, Inc.	ESX550-201403207-LG	Add to baseline...
updates ESXi 5.5 sata-ahci vib	embeddedEsx 5.5.3	11/03/2014 00:00:00	Update	Important	BugFix	Reboot, Maintenance Mode	VMware, Inc.	ESX550-201403208-LG	Add to baseline...
updates ESXi 5.5 sata-megaraid-sas vib	embeddedEsx 5.5.3	11/03/2014 00:00:00	Update	Important	BugFix	Reboot, Maintenance Mode	VMware, Inc.	ESX550-201403209-LG	Add to baseline...
updates ESXi 5.5 net-usb vib	embeddedEsx 5.5.3	11/03/2014 00:00:00	Update	Important	Enhancement	Reboot, Maintenance Mode	VMware, Inc.	ESX550-201403210-LG	Add to baseline...
updates ESXi 5.5 net-tcp vib	embeddedEsx 5.5.3	11/03/2014 00:00:00	Update	Critical	BugFix	Reboot, Maintenance Mode	VMware, Inc.	ESX550-201403211-LG	Add to baseline...
res description, (file diff)	embeddedEsx 5.5.3	11/03/2014 00:00:00	Rollup	Critical	BugFix		VMware, Inc.	ESX550-Update01	Add to baseline...
updates VMS, hostd, Scripts, CPM, Others	esx 4.8.3	10/04/2014 00:00:00	Patch	Critical	Security	Reboot, Maintenance Mode, ...	VMware, Inc.	ESX400-201404011-0G	Add to baseline...
updates mtp	esx 4.8.3	10/04/2014 00:00:00	Patch	Critical	Security		VMware, Inc.	ESX400-201404012-0G	Add to baseline...
updates VMC, guest-install, Apps	esx 4.1.3	10/04/2014 00:00:00	Patch	Critical	Security	Reboot, Maintenance Mode, ...	VMware, Inc.	ESX400-201404013-0G	Add to baseline...
updates mtp	esx 4.1.3	10/04/2014 00:00:00	Patch	Critical	Security		VMware, Inc.	ESX400-201404014-0G	Add to baseline...
updates Firmware	embeddedEsx 4.8.3	10/04/2014 00:00:00	Patch	Critical	Security	Reboot, Maintenance Mode	VMware, Inc.	ESX400-201404015-0G	Add to baseline...
updates vSphere Client	embeddedEsx 4.8.3	10/04/2014 00:00:00	Patch	Critical	Security		VMware, Inc.	ESX400-201404016-0G	Add to baseline...
updates Firmware	embeddedEsx 4.1.3	10/04/2014 00:00:00	Patch	Critical	Security	Reboot, Maintenance Mode	VMware, Inc.	ESX410-201404017-0G	Add to baseline...
updates esx-base	embeddedEsx 5.0.3	10/04/2014 00:00:00	Patch	Critical	Security	Reboot, Maintenance Mode	VMware, Inc.	ESX500-201404018-0G	Add to baseline...
updates tools-light	embeddedEsx 5.0.3	10/04/2014 00:00:00	Patch	Important	BugFix		VMware, Inc.	ESX500-201404019-0G	Add to baseline...
updates lsi-m3	embeddedEsx 5.0.3	10/04/2014 00:00:00	Patch	Important	BugFix	Reboot, Maintenance Mode	VMware, Inc.	ESX500-201404020-0G	Add to baseline...
updates esx-base	embeddedEsx 5.0.3	10/04/2014 00:00:00	Patch	Critical	Security	Reboot, Maintenance Mode	VMware, Inc.	ESX500-201404021-0G	Add to baseline...
updates esx-base	embeddedEsx 5.1.3	20/04/2014 00:00:00	Patch	Critical	Security	Reboot, Maintenance Mode	VMware, Inc.	ESX510-201404022-0G	Add to baseline...
updates tools-light	embeddedEsx 5.1.3	20/04/2014 00:00:00	Patch	Important	BugFix	Reboot, Maintenance Mode	VMware, Inc.	ESX510-201404023-0G	Add to baseline...
updates esx-base	embeddedEsx 5.1.3	20/04/2014 00:00:00	Patch	Critical	BugFix	Reboot, Maintenance Mode	VMware, Inc.	ESX510-201404024-0G	Add to baseline...
updates tools-light	embeddedEsx 5.1.3	20/04/2014 00:00:00	Patch	Important	BugFix		VMware, Inc.	ESX510-201404025-0G	Add to baseline...
updates esx-base	embeddedEsx 5.0.3	20/05/2014 00:00:00	Patch	Critical	Security	Reboot, Maintenance Mode	VMware, Inc.	ESX500-201405001-0G	Add to baseline...
updates tools-light	embeddedEsx 5.0.3	20/05/2014 00:00:00	Patch	Important	Security		VMware, Inc.	ESX500-201405002-0G	Add to baseline...
updates esx-base	embeddedEsx 5.0.3	20/05/2014 00:00:00	Patch	Important	BugFix	Reboot, Maintenance Mode	VMware, Inc.	ESX500-201405003-0G	Add to baseline...
updates tools-light	embeddedEsx 5.0.3	20/05/2014 00:00:00	Patch	Important	BugFix		VMware, Inc.	ESX500-201405004-0G	Add to baseline...
updates acsi-megaraid	embeddedEsx 5.0.3	20/05/2014 00:00:00	Patch	Important	BugFix	Reboot, Maintenance Mode	VMware, Inc.	ESX500-201405005-0G	Add to baseline...
tg3 driver for i386	embeddedEsx 5.5, emb...	20/05/2014 11:05:58	Host Extension	Important	Enhancement	Reboot, Maintenance Mode	Broadcom	ESX550-201405058-0G	Add to baseline...

Una vez en nuestro repositorio ya sólo bastaría con crear una nueva baseline o añadirla a una ya existente. En nuestro caso creamos una nueva baseline y se la asociamos a los esxi que tengan ese tipo de tarjeta.

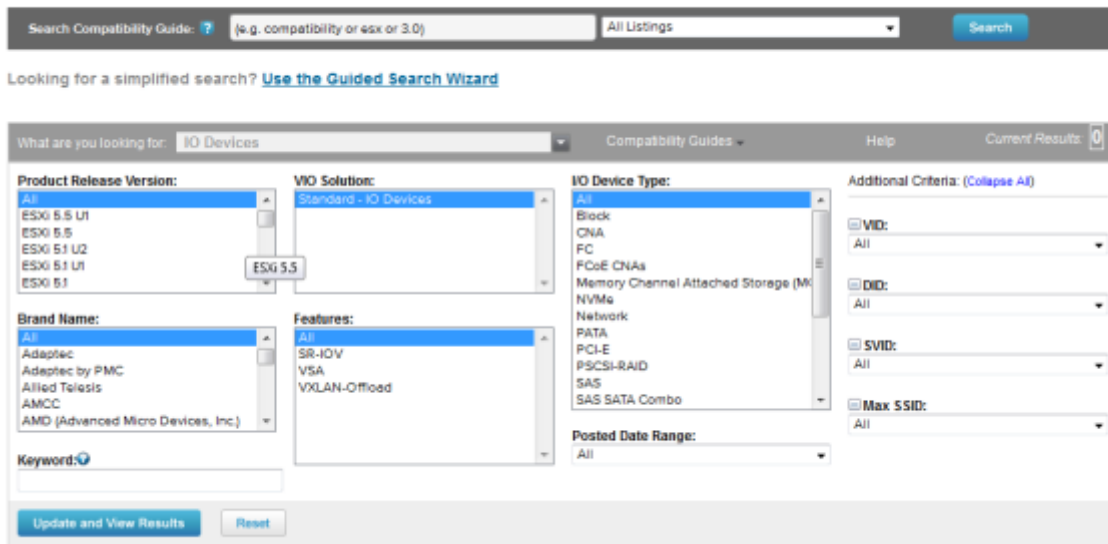


Una vez asociada la nueva baseline con el ESXI bastaría con pinchar sobre el botón **Remediate** de la pestaña Update Manager

Buscar Driver

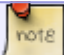
Otra opción para encontrar el driver adecuado es ir a VMware Compatibility Guide <http://www.vmware.com/resources/compatibility/search.php> y realizar la búsqueda según el criterio deseado.

VMware Compatibility Guide



Por ejemplo en el caso de las tarjetas de red podemos buscar por los campos

- VID→Vendor ID
- DID→Device ID
- SVID→Sub-vendor ID
- SSID→Sub Device ID

 Normalmente sólo tenemos que poner los dos primeros para realizar la búsqueda

Esos parámetros se pueden obtener conectandonos por consola a ESXi y ejecutar el siguiente comando

```
vmkchdev -l grep "vmnic"
```

y nos saldrá una pantalla similar a esta

```
~ # vmkchdev -l | grep "vmnic"
0000:05:00.0 14e4:164c 1028:01b2 vmkernel vmnic0
0000:09:00.0 14e4:164c 1028:01b2 vmkernel vmnic1
0000:0d:00.0 14e4:164c 14e4:164c vmkernel vmnic2
          VID:DID  SVID:SSID
```

 Con

```
ethtool -i vmnic0
```



podemos saber la versión del driver que tenemos instalado

Referencias

- <http://adriank.org/how-to-update-intelbroadcom-network-drivers-on-esxi-45/>

From:
<http://wiki.intrusos.info/> - LCWIKI

Permanent link:
<http://wiki.intrusos.info/doku.php?id=virtualizacion:vmware:version5:driver&rev=1402479793>

Last update: **2023/01/18 14:41**

