

Instalar Driver tarjeta Broadcom

vamos a la página de descargas para vsphere.

https://my.vmware.com/group/vmware/info?slug=datacenter_cloud_infrastructure/vmware_vsphere/5_5 Elegimos nuestra versión de vsphere →5.5 y pulsamos sobre la pestaña Drivers&Tools→Driver Cds y descargamos el driver adecuado. En nuestro caso el Vmware ESXi 5.5 Driver CD for Broadcom

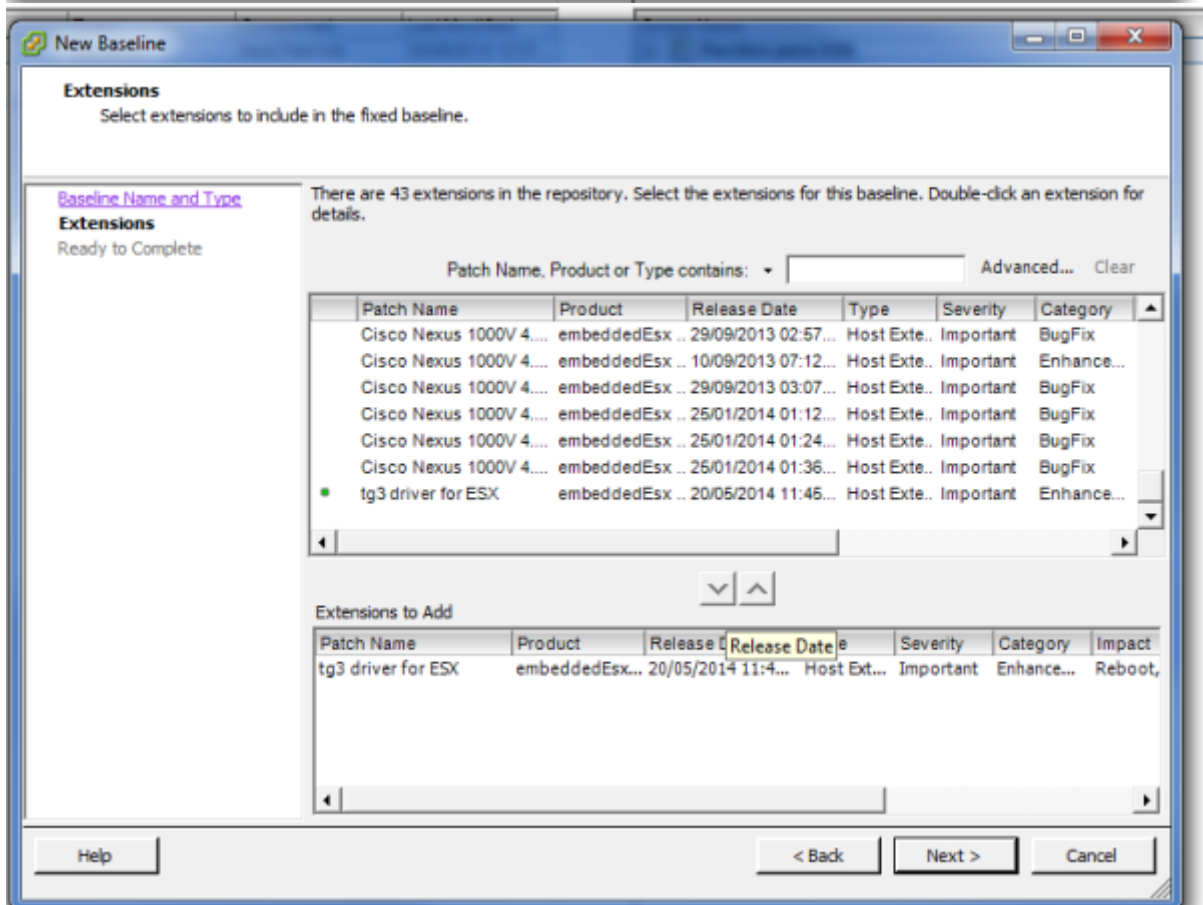
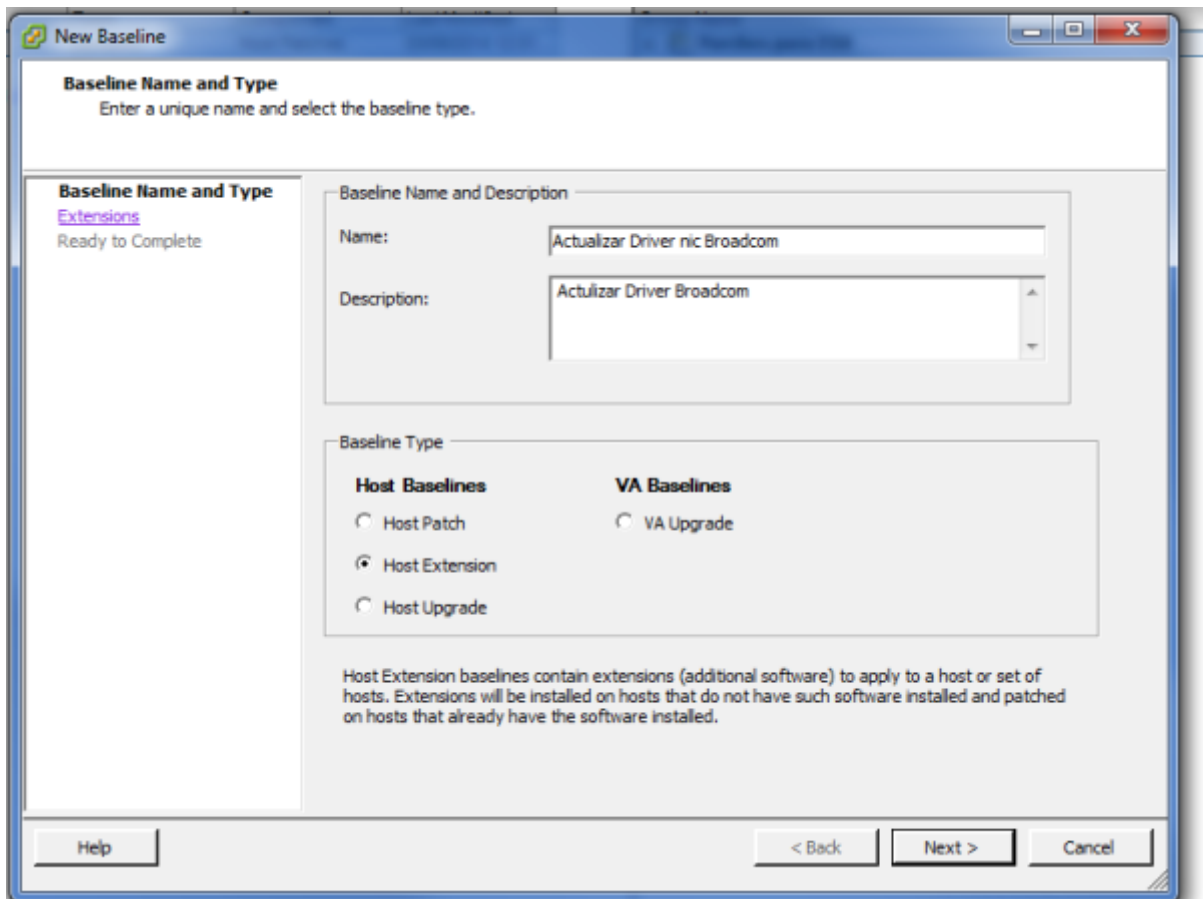
En nuestro caso nos bajamos el archivo tg3-3.136h.v55.1-1830969.zip que lo descomprimos en una carpeta.

Aunque el paquete se puede instalar directamente en el esxi nosotros lo vamos a instalar usando el update manager del vcenter.

Vcenter→update Manager → Pestaña Patch Repository → Import Patches →y cogemos el fichero tg3-3.136h.v55.1-offline_bundle-1830969.zip que está dentro de la carpeta donde descomprimimos

Patch Name	Product	Release Date	Type	Severity	Category	Impact	Vendor	Patch ID	Resolves
Cisco Nexus 5000v 4.2(0)2(2.2)	embeddedEsx 5.5.3	25/01/2014 01:26:13	Host Extension	Important	BugFix	Maintenance Mode(Update)	Cisco Systems, Inc.	ESX550-201401194504-EG	Add to baseline...
updates ESXi 5.5 esx-base vib	embeddedEsx 5.5.3	11/03/2014 00:00:00	Update	Critical	Security	Raboot, Maintenance Mode	VMware, Inc.	ESX550-201403200-GG	Add to baseline...
updates ESXi 5.5 tools-light vib	embeddedEsx 5.5.3	11/03/2014 00:00:00	Patch	Important	Security		VMware, Inc.	ESX550-201403200-GG	Add to baseline...
updates ESXi 5.5 esx-base vib	embeddedEsx 5.5.3	11/03/2014 00:00:00	Update	Critical	BugFix	Raboot, Maintenance Mode	VMware, Inc.	ESX550-201403200-LG	Add to baseline...
updates ESXi 5.5 tools-light vib	embeddedEsx 5.5.3	11/03/2014 00:00:00	Update	Important	BugFix		VMware, Inc.	ESX550-201403200-LG	Add to baseline...
updates ESXi 5.5 net-x1000e vib	embeddedEsx 5.5.3	11/03/2014 00:00:00	Update	Important	BugFix	Raboot, Maintenance Mode	VMware, Inc.	ESX550-201403200-LG	Add to baseline...
updates ESXi 5.5 acsi-mp12sas vib	embeddedEsx 5.5.3	11/03/2014 00:00:00	Update	Important	BugFix	Raboot, Maintenance Mode	VMware, Inc.	ESX550-201403200-LG	Add to baseline...
updates ESXi 5.5 lsi-mega3 vib	embeddedEsx 5.5.3	11/03/2014 00:00:00	Update	Important	BugFix	Raboot, Maintenance Mode	VMware, Inc.	ESX550-201403200-LG	Add to baseline...
updates ESXi 5.5 mpt3200-native vib	embeddedEsx 5.5.3	11/03/2014 00:00:00	Update	Important	BugFix	Raboot, Maintenance Mode	VMware, Inc.	ESX550-201403200-LG	Add to baseline...
updates ESXi 5.5 sata-ahci vib	embeddedEsx 5.5.3	11/03/2014 00:00:00	Update	Important	BugFix	Raboot, Maintenance Mode	VMware, Inc.	ESX550-201403200-LG	Add to baseline...
updates ESXi 5.5 sata-megaahci vib	embeddedEsx 5.5.3	11/03/2014 00:00:00	Update	Important	BugFix	Raboot, Maintenance Mode	VMware, Inc.	ESX550-201403200-LG	Add to baseline...
updates ESXi 5.5 net-igb-vib	embeddedEsx 5.5.3	11/03/2014 00:00:00	Update	Important	Enhancement	Raboot, Maintenance Mode	VMware, Inc.	ESX550-201403210-LG	Add to baseline...
updates ESXi 5.5 net-igb-vib	embeddedEsx 5.5.3	11/03/2014 00:00:00	Update	Critical	BugFix	Raboot, Maintenance Mode	VMware, Inc.	ESX550-201403210-LG	Add to baseline...
res description, (file x86)	esx 4.0.8	10/04/2014 00:00:00	Rollup	Critical	BugFix		VMware, Inc.	ESX400-Update031	Add to baseline...
updates VMK, hostd, Scripts, CPM, Others	esx 4.0.8	10/04/2014 00:00:00	Patch	Critical	Security	Raboot, Maintenance Mode, ...	VMware, Inc.	ESX400-201404010-0G	Add to baseline...
updates ntp	esx 4.0.8	10/04/2014 00:00:00	Patch	Critical	Security		VMware, Inc.	ESX400-201404010-0G	Add to baseline...
updates VMK, guest-install, Apps	esx 4.1.0	10/04/2014 00:00:00	Patch	Critical	Security	Raboot, Maintenance Mode, ...	VMware, Inc.	ESX400-201404010-0G	Add to baseline...
updates ntp	esx 4.1.0	10/04/2014 00:00:00	Patch	Critical	Security		VMware, Inc.	ESX400-201404010-0G	Add to baseline...
updates Firmware	embeddedEsx 4.0.8	10/04/2014 00:00:00	Patch	Critical	Security	Raboot, Maintenance Mode	VMware, Inc.	ESX400-201404010-0G	Add to baseline...
updates vSphere Client	embeddedEsx 4.0.8	10/04/2014 00:00:00	Patch	Critical	Security		VMware, Inc.	ESX400-201404010-0G	Add to baseline...
updates Firmware	embeddedEsx 4.1.0	10/04/2014 00:00:00	Patch	Critical	Security	Raboot, Maintenance Mode	VMware, Inc.	ESX410-201404010-0G	Add to baseline...
updates esx-base	embeddedEsx 5.0.0	10/04/2014 00:00:00	Patch	Critical	Security	Raboot, Maintenance Mode	VMware, Inc.	ESX500-201404010-0G	Add to baseline...
updates tools-light	embeddedEsx 5.0.0	10/04/2014 00:00:00	Patch	Important	BugFix		VMware, Inc.	ESX500-201404010-0G	Add to baseline...
updates lsi-m3	embeddedEsx 5.0.0	10/04/2014 00:00:00	Patch	Important	BugFix	Raboot, Maintenance Mode	VMware, Inc.	ESX500-201404010-0G	Add to baseline...
updates esx-base	embeddedEsx 5.0.0	10/04/2014 00:00:00	Patch	Critical	Security	Raboot, Maintenance Mode	VMware, Inc.	ESX500-201404010-0G	Add to baseline...
updates esx-base	embeddedEsx 5.1.0	20/04/2014 00:00:00	Patch	Critical	Security	Raboot, Maintenance Mode	VMware, Inc.	ESX510-201404010-0G	Add to baseline...
updates tools-light	embeddedEsx 5.1.0	20/04/2014 00:00:00	Patch	Important	BugFix	Raboot, Maintenance Mode	VMware, Inc.	ESX510-201404010-0G	Add to baseline...
updates esx-base	embeddedEsx 5.1.0	20/04/2014 00:00:00	Patch	Important	BugFix	Raboot, Maintenance Mode	VMware, Inc.	ESX510-201404010-0G	Add to baseline...
updates tools-light	embeddedEsx 5.0.0	20/05/2014 00:00:00	Patch	Important	Security	Raboot, Maintenance Mode	VMware, Inc.	ESX500-201405010-0G	Add to baseline...
updates esx-base	embeddedEsx 5.0.0	20/05/2014 00:00:00	Patch	Important	Security	Raboot, Maintenance Mode	VMware, Inc.	ESX500-201405010-0G	Add to baseline...
updates tools-light	embeddedEsx 5.0.0	20/05/2014 00:00:00	Patch	Important	BugFix	Raboot, Maintenance Mode	VMware, Inc.	ESX500-201405010-0G	Add to baseline...
updates esx-base	embeddedEsx 5.0.0	20/05/2014 00:00:00	Patch	Important	BugFix	Raboot, Maintenance Mode	VMware, Inc.	ESX500-201405010-0G	Add to baseline...
updates tools-light	embeddedEsx 5.0.0	20/05/2014 00:00:00	Patch	Important	BugFix	Raboot, Maintenance Mode	VMware, Inc.	ESX500-201405010-0G	Add to baseline...
updates acsi-megaahci	embeddedEsx 5.0.0	20/05/2014 00:00:00	Patch	Important	BugFix	Raboot, Maintenance Mode	VMware, Inc.	ESX500-201405010-0G	Add to baseline...
tg3 driver for i386	embeddedEsx 5.5, emb...	20/05/2014 11:05:58	Host Extension	Important	Enhancement	Raboot, Maintenance Mode	Broadcom	ESX550-201405010-0G	Add to baseline...

Una vez en nuestro repositorio ya sólo bastaría con crear una nueva baseline o añadirla a una ya existente. En nuestro caso creamos una nueva baseline y se la asociamos a los esxi que tengan ese tipo de tarjeta.



Buscar Driver

Otra opción para encontrar el driver adecuado es ir a VMware Compatibility Guide <http://www.vmware.com/resources/compatibility/search.php> y realizar la búsqueda según el criterio deseado. Con

```
ethtool -i vmnic0
```

podemos saber la versión del driver que tenemos instalado

Por ejemplo en el caso de las tarjetas de red podemos buscar por los campos

- VID→Vendor ID
- DID→Device ID
- SVID→Sub-vendor ID
- SSID→Sub Device ID



Normalmente sólo tenemos que poner los dos primeros para realizar la búsqueda

Esos parámetros se pueden obtener conectándonos por consola a ESXi y ejecutar el siguiente comando

```
vmkchdev -l grep "vmnic"
```

y nos saldrá una pantalla similar a esta

```
~ # vmkchdev -l | grep "vmnic"
0000:05:00.0 14e4:164c 1028:01b2 vmkernel vmnic0
0000:09:00.0 14e4:164c 1028:01b2 vmkernel vmnic1
0000:0d:00.0 14e4:164c 14e4:164c vmkernel vmnic2
          VID:DID  SVID:SSID
```

Referencias

- <http://adriank.org/how-to-update-intelbroadcom-network-drivers-on-esxi-45/>

From:

<http://wiki.intrusos.info/> - **LCWIKI**

Permanent link:

<http://wiki.intrusos.info/doku.php?id=virtualizacion:vmware:version5:driver&rev=1402479515>

Last update: **2023/01/18 14:41**

