

vmware, esx, i, driver, broadcom, vmnic, actualizar

Instalar Driver tarjeta Broadcom

vamos a la página de descargas para vsphere.

https://my.vmware.com/group/vmware/info?slug=datacenter_cloud_infrastructure/vmware_vsphere/5_5 Elegimos nuestra versión de vsphere →5.5 y pulsamos sobre la pestaña Drivers&Tools→Driver Cds y descargamos el driver adecuado. En nuestro caso el Vmware ESXi 5.5 Driver CD for Broadcom

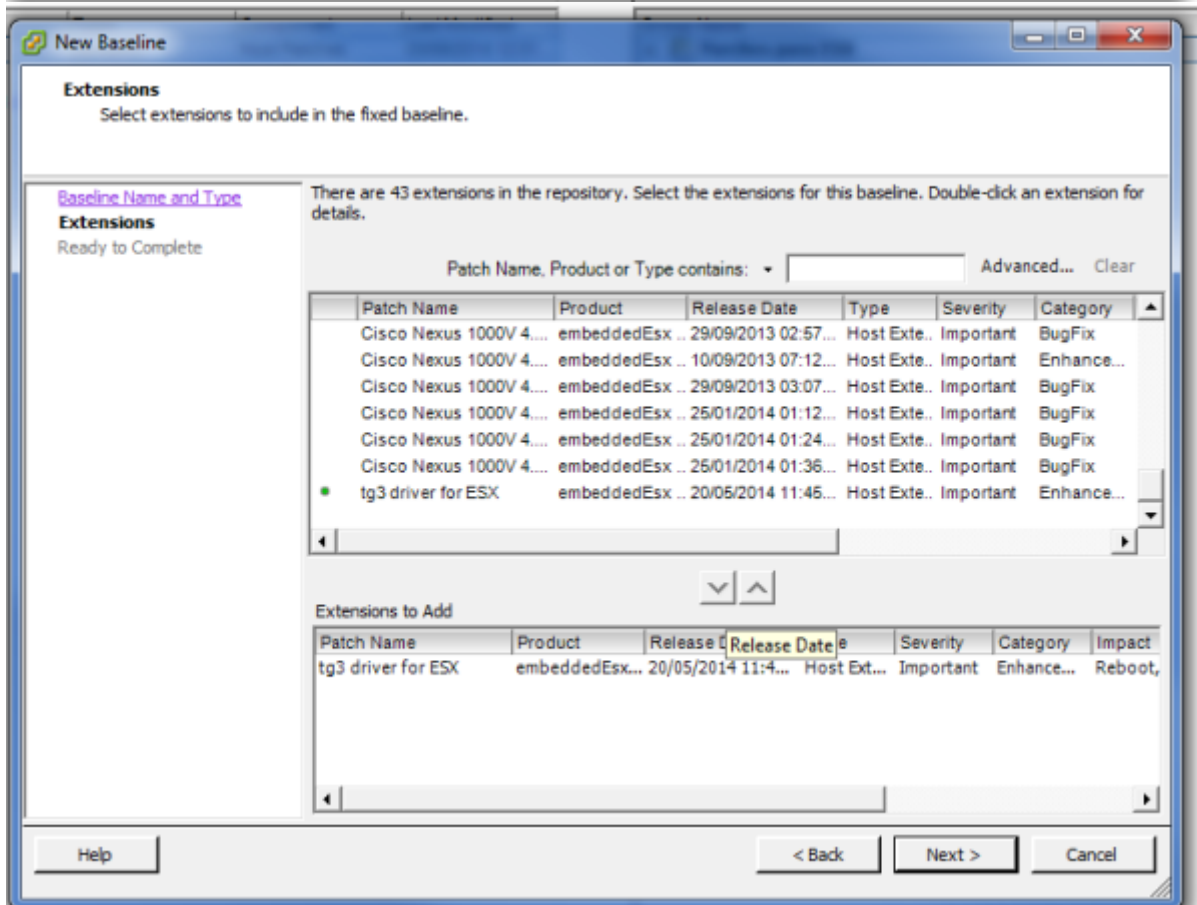
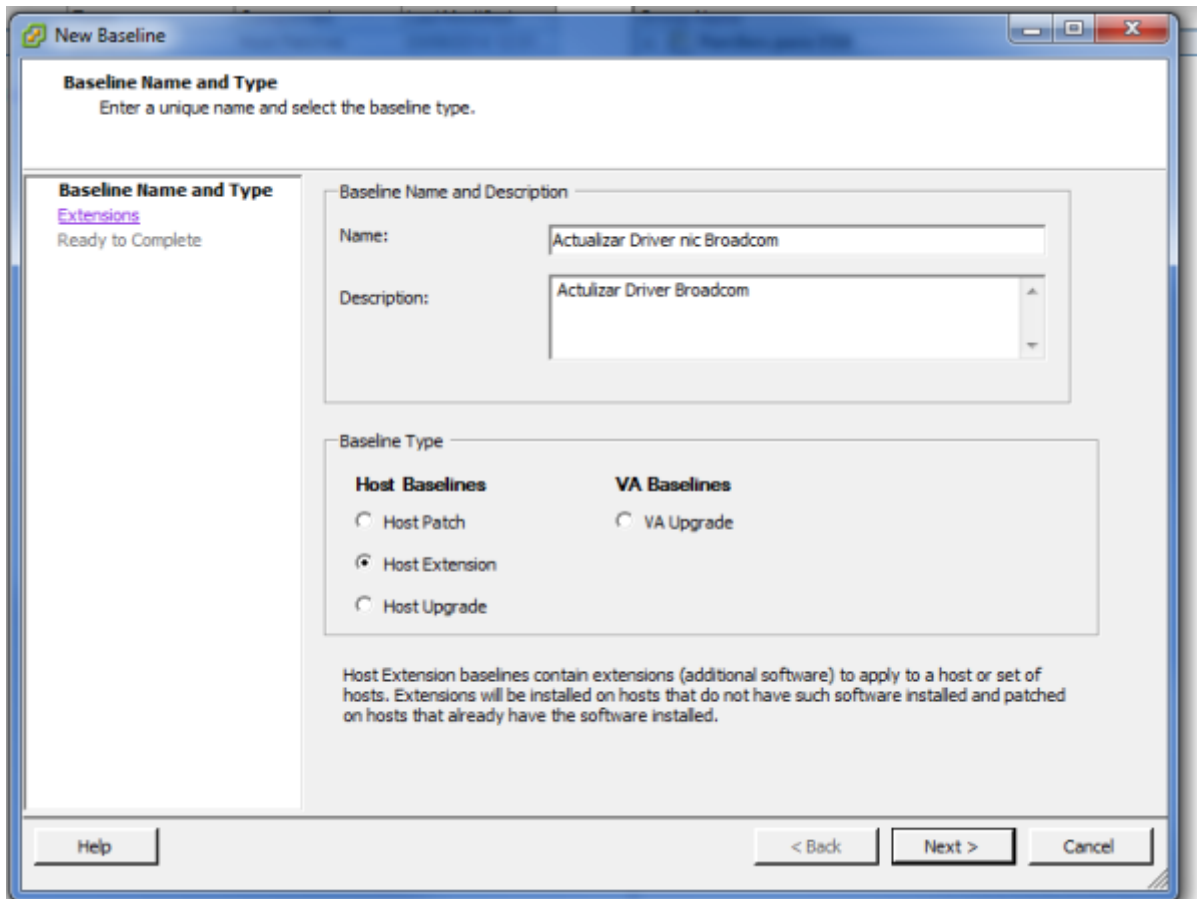
En nuestro caso nos bajamos el archivo tg3-3.136h.v55.1-1830969.zip que lo descomprimos en una carpeta.

Aunque el paquete se puede instalar directamente en el esxi nosotros lo vamos a instalar usando el update manager del vcenter.

Vcenter→update Manager → Pestaña Patch Repository → Import Patches →y cogemos el fichero tg3-3.136h.v55.1-offline_bundle-1830969.zip que está dentro de la carpeta donde descomprimos

Patch Name	Product	Release Date	Type	Severity	Category	Impact	Vendor	Patch ID	Resolves
Cisco Nexus 4200(SV22.2)	embeddedOx 5.5.8	20/02/2014 01:26:13	Host Extension	Important	BugFix	Maintenance Mode(Update)	Cisco Systems, Inc.	ESX550-2014021404-EG	Add to baseline...
updates ESXi 5.5 esx-base vib	embeddedOx 5.5.8	11/03/2014 00:00:00	Update	Critical	Security	Reboot, Maintenance Mode	VMware, Inc.	ESX550-20140300-66	Add to baseline...
updates ESXi 5.5 tools-light vib	embeddedOx 5.5.8	11/03/2014 00:00:00	Patch	Important	Security		VMware, Inc.	ESX550-20140300-66	Add to baseline...
updates ESXi 5.5 esx-base vib	embeddedOx 5.5.8	11/03/2014 00:00:00	Update	Critical	BugFix	Reboot, Maintenance Mode	VMware, Inc.	ESX550-20140300-U3	Add to baseline...
updates ESXi 5.5 tools-light vib	embeddedOx 5.5.8	11/03/2014 00:00:00	Update	Important	BugFix		VMware, Inc.	ESX550-20140300-U3	Add to baseline...
updates ESXi 5.5 ntp vib	embeddedOx 5.5.8	11/03/2014 00:00:00	Update	Important	BugFix	Reboot, Maintenance Mode	VMware, Inc.	ESX550-20140300-U3	Add to baseline...
updates ESXi 5.5 net-usb vib	embeddedOx 5.5.8	11/03/2014 00:00:00	Update	Important	BugFix	Reboot, Maintenance Mode	VMware, Inc.	ESX550-20140300-U3	Add to baseline...
updates ESXi 5.5 scsi-mpt2sas vib	embeddedOx 5.5.8	11/03/2014 00:00:00	Update	Important	BugFix	Reboot, Maintenance Mode	VMware, Inc.	ESX550-20140300-U3	Add to baseline...
updates ESXi 5.5 lsi-megaS2 vib	embeddedOx 5.5.8	11/03/2014 00:00:00	Update	Important	BugFix	Reboot, Maintenance Mode	VMware, Inc.	ESX550-20140300-U3	Add to baseline...
updates ESXi 5.5 mpt3sas-native vib	embeddedOx 5.5.8	11/03/2014 00:00:00	Update	Important	BugFix	Reboot, Maintenance Mode	VMware, Inc.	ESX550-20140300-U3	Add to baseline...
updates ESXi 5.5 sata-ahci vib	embeddedOx 5.5.8	11/03/2014 00:00:00	Update	Important	BugFix	Reboot, Maintenance Mode	VMware, Inc.	ESX550-20140300-U3	Add to baseline...
updates ESXi 5.5 esx-regard-sas vib	embeddedOx 5.5.8	11/03/2014 00:00:00	Update	Important	BugFix	Reboot, Maintenance Mode	VMware, Inc.	ESX550-20140300-U3	Add to baseline...
updates ESXi 5.5 net-usb vib	embeddedOx 5.5.8	11/03/2014 00:00:00	Update	Important	Enhancement	Reboot, Maintenance Mode	VMware, Inc.	ESX550-20140321-U3	Add to baseline...
updates ESXi 5.5 net-fxp vib	embeddedOx 5.5.8	11/03/2014 00:00:00	Update	Critical	BugFix	Reboot, Maintenance Mode	VMware, Inc.	ESX550-20140321-U3	Add to baseline...
see description, file ID	embeddedOx 5.5.8	11/03/2014 00:00:00	Rollup	Critical	BugFix	Reboot, Maintenance Mode	VMware, Inc.	ESX550-20140401	Add to baseline...
updates VML, hostd, Scripts, CPM, Others	esx 4.8.0	10/04/2014 00:00:00	Patch	Critical	Security	Reboot, Maintenance Mode...	VMware, Inc.	ESX480-20140401-9G	Add to baseline...
updates ntp	esx 4.8.0	10/04/2014 00:00:00	Patch	Critical	Security		VMware, Inc.	ESX480-20140402-9G	Add to baseline...
updates VMC, guest-install, Apps	esx 4.1.0	10/04/2014 00:00:00	Patch	Critical	Security	Reboot, Maintenance Mode, ...	VMware, Inc.	ESX400-20140401-9G	Add to baseline...
updates ntp	esx 4.1.0	10/04/2014 00:00:00	Patch	Critical	Security		VMware, Inc.	ESX400-20140402-9G	Add to baseline...
updates Firmware	embeddedOx 4.8.0	10/04/2014 00:00:00	Patch	Critical	Security	Reboot, Maintenance Mode	VMware, Inc.	ESX480-20140401-9G	Add to baseline...
updates vix-base Client	embeddedOx 4.8.0	10/04/2014 00:00:00	Patch	Critical	Security		VMware, Inc.	ESX480-20140402-9G	Add to baseline...
updates Firmware	embeddedOx 4.1.0	10/04/2014 00:00:00	Patch	Critical	Security	Reboot, Maintenance Mode	VMware, Inc.	ESX410-20140401-9G	Add to baseline...
updates esx-base	embeddedOx 5.5.8	20/04/2014 00:00:00	Patch	Critical	Security	Reboot, Maintenance Mode	VMware, Inc.	ESX550-20140402-6G	Add to baseline...
updates tools-light	embeddedOx 5.5.8	20/04/2014 00:00:00	Patch	Important	BugFix		VMware, Inc.	ESX550-20140402-6G	Add to baseline...
updates lsi-m3	embeddedOx 5.5.8	20/04/2014 00:00:00	Patch	Important	BugFix	Reboot, Maintenance Mode	VMware, Inc.	ESX550-20140402-6G	Add to baseline...
updates esx-base	embeddedOx 5.5.8	20/04/2014 00:00:00	Patch	Critical	Security	Reboot, Maintenance Mode	VMware, Inc.	ESX550-20140402-6G	Add to baseline...
updates esx-base	embeddedOx 5.1.0	20/04/2014 00:00:00	Patch	Critical	Security	Reboot, Maintenance Mode	VMware, Inc.	ESX510-20140402-6G	Add to baseline...
updates tools-light	embeddedOx 5.1.0	20/04/2014 00:00:00	Patch	Important	Security		VMware, Inc.	ESX510-20140402-6G	Add to baseline...
updates esx-base	embeddedOx 5.1.0	20/04/2014 00:00:00	Patch	Critical	BugFix	Reboot, Maintenance Mode	VMware, Inc.	ESX510-20140402-6G	Add to baseline...
updates tools-light	embeddedOx 5.1.0	20/04/2014 00:00:00	Patch	Important	BugFix	Reboot, Maintenance Mode	VMware, Inc.	ESX510-20140402-6G	Add to baseline...
updates esx-base	embeddedOx 5.0.0	20/05/2014 00:00:00	Patch	Critical	Security	Reboot, Maintenance Mode	VMware, Inc.	ESX500-20140502-5D	Add to baseline...
updates tools-light	embeddedOx 5.0.0	20/05/2014 00:00:00	Patch	Important	Security		VMware, Inc.	ESX500-20140502-5D	Add to baseline...
updates esx-base	embeddedOx 5.0.0	20/05/2014 00:00:00	Patch	Important	BugFix	Reboot, Maintenance Mode	VMware, Inc.	ESX500-20140502-5D	Add to baseline...
updates tools-light	embeddedOx 5.0.0	20/05/2014 00:00:00	Patch	Important	BugFix	Reboot, Maintenance Mode	VMware, Inc.	ESX500-20140502-5D	Add to baseline...
updates scsi-megaraid-sas	embeddedOx 5.0.0	20/05/2014 00:00:00	Patch	Important	BugFix	Reboot, Maintenance Mode	VMware, Inc.	ESX500-20140502-5D	Add to baseline...
tg3 driver for ESX	embeddedOx 5.5, esx...	20/05/2014 11:45:58	Host Extension	Important	Enhancement	Reboot, Maintenance Mode	Broadcom	tg3-3.136h.v55.1	Add to baseline...

Una vez en nuestro repositorio ya sólo bastaría con crear una nueva baseline o añadirla a una ya existente. En nuestro caso creamos una nueva baseline y se la asociamos a los esxi que tengan ese tipo de tarjeta.

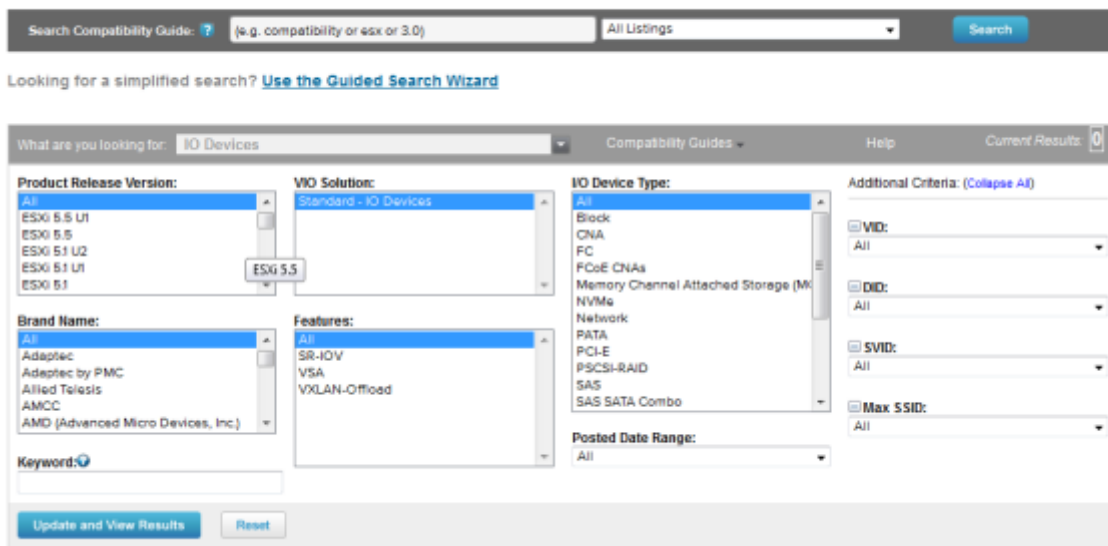


Una vez asociada la nueva baseline con el ESXI bastaría con pinchar sobre el botón **Remediate** de la pestaña Update Manager

Buscar Driver

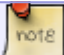
Otra opción para encontrar el driver adecuado es ir a VMware Compatibility Guide <http://www.vmware.com/resources/compatibility/search.php> y realizar la búsqueda según el criterio deseado.

VMware Compatibility Guide



Por ejemplo en el caso de las tarjetas de red podemos buscar por los campos

- VID→Vendor ID
- DID→Device ID
- SVID→Sub-vendor ID
- SSID→Sub Device ID

 Normalmente sólo tenemos que poner los dos primeros para realizar la búsqueda

Esos parámetros se pueden obtener conectandonos por consola a ESXi y ejecutar el siguiente comando

```
vmkchdev -l grep "vmnic"
```

y nos saldrá una pantalla similar a esta

```
~ # vmkchdev -l | grep "vmnic"
0000:05:00.0 14e4:164c 1028:01b2 vmkernel vmnic0
0000:09:00.0 14e4:164c 1028:01b2 vmkernel vmnic1
0000:0d:00.0 14e4:164c 14e4:164c vmkernel vmnic2
          VID:DID  SVID:SSID
```

 Con



```
ethtool -i vmnic0
```

podemos saber la versión del driver que tenemos instalado

Referencias

- <http://adriank.org/how-to-update-intelbroadcom-network-drivers-on-esxi-45/>

From:

<http://wiki.intrusos.info/> - **LCWIKI**

Permanent link:

<http://wiki.intrusos.info/doku.php?id=virtualizacion:vmware:version5:driver>

Last update: **2023/01/18 14:46**

